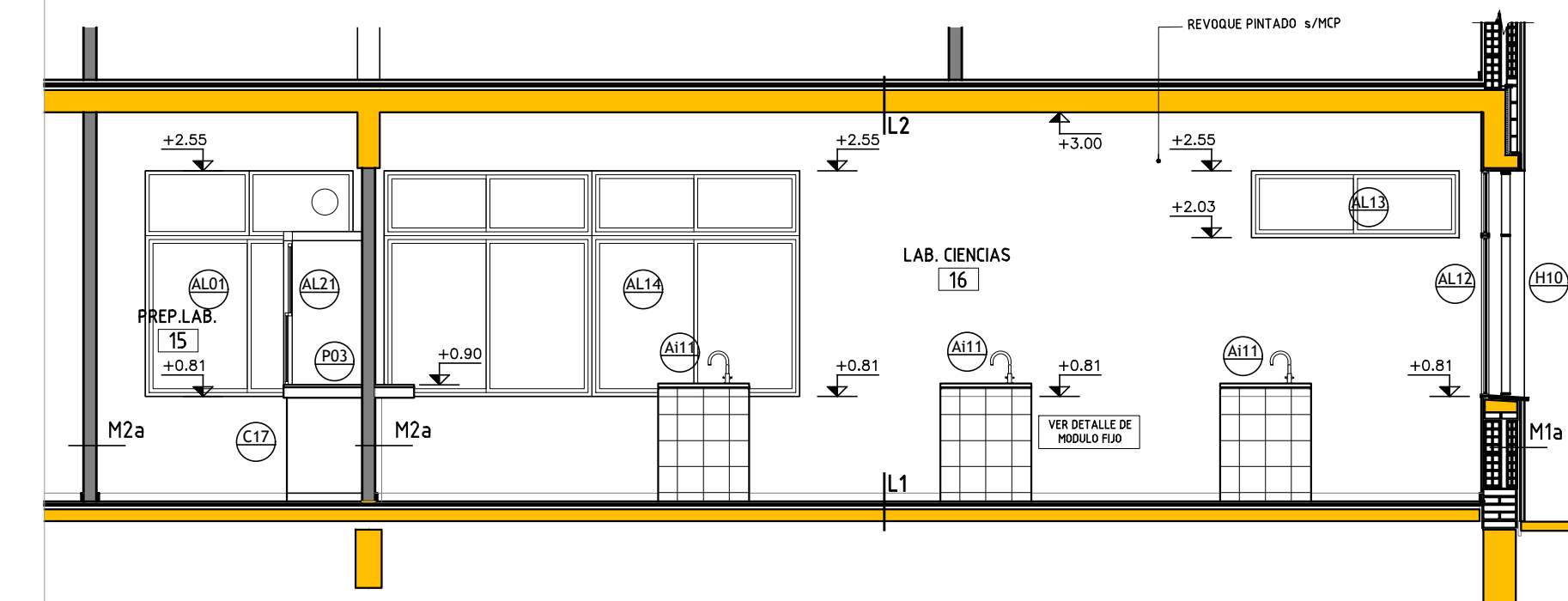
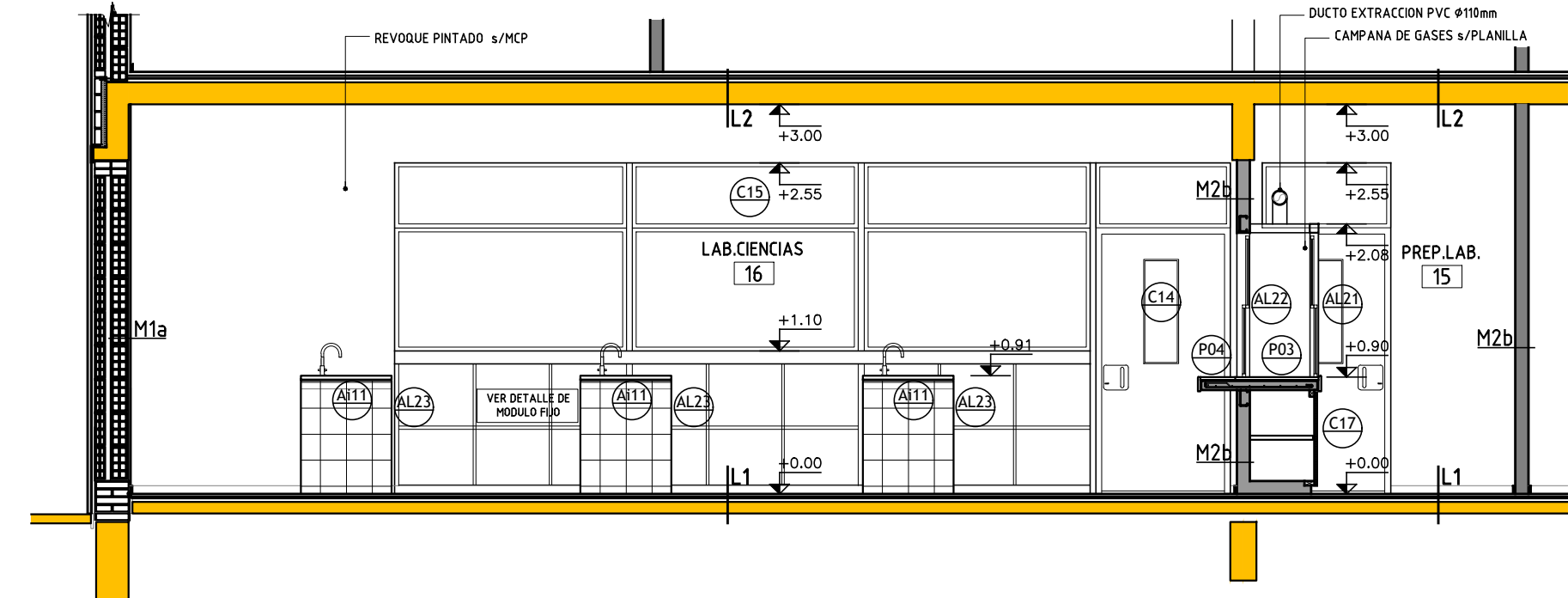


PLANTA ESC. 1:50



CORTE 3-3 ESC. 1:50



CORTE 4-4 ESC. 1:50

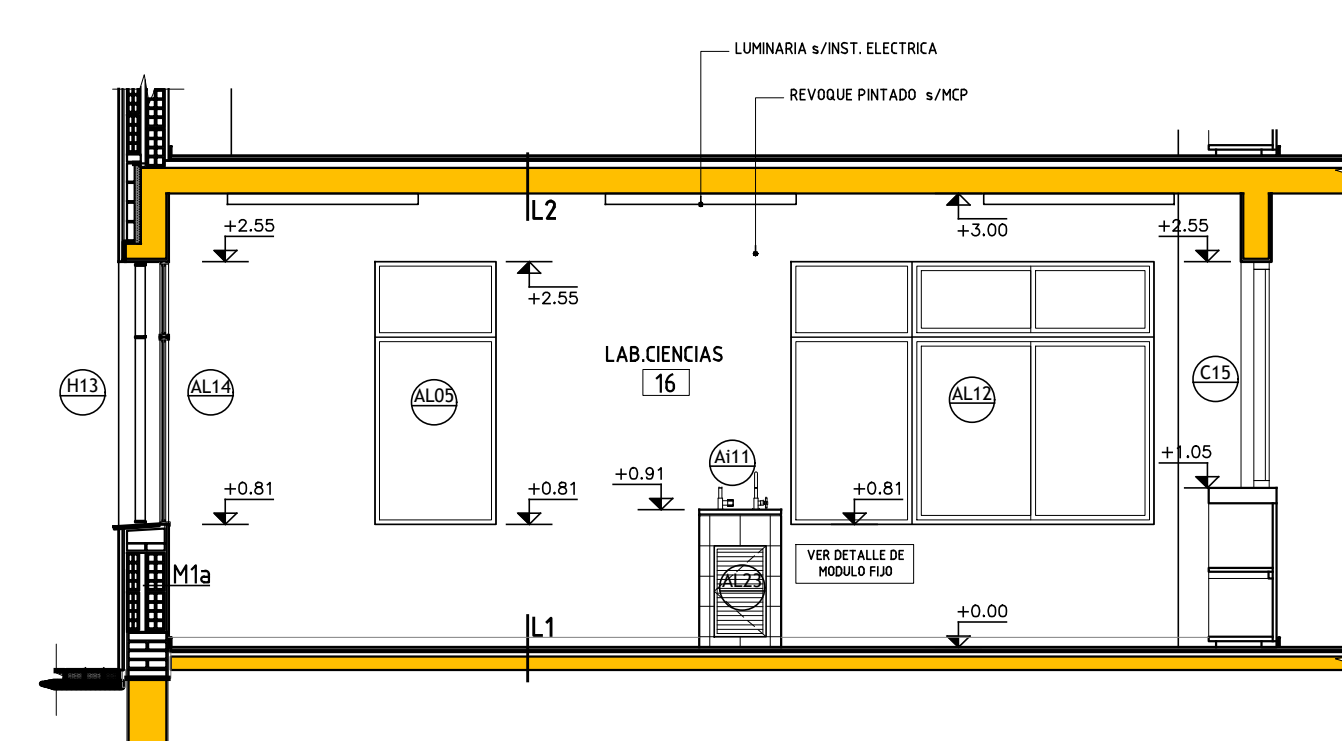
PLANILLA DE MUROS	
REFERENCIAS esc: 1/20	
1- TICHLO 17x25x25cm	12- HORMIGÓN ARMADO
2- TICHLO 12x25x25cm	13- REVOQUE GRUESO BAJO REVESTIMIENTO Y ADHESIVO PREFORMADO
3- TICHLO 8x25x25cm	14- LADRILLO DE PIRENSA 12x6+24
4- MORTERO DE ASIENTO O TOMA	15- REVOQUE IMPERMEABLE - HODRIFUGO
6- REVOQUE INTERIOR GRUESO Y FINO	16- ADHESIVO PREFORMADO
7- REVOQUE EXTERIOR A CAPAS	17- PINTURA S/MCP
8- AZOTADA c/MORTERO	18- ENDUIDO + PINTURA S/MCP
7- IMPERMEABILIZACIÓN	
8- AISLANTE TÉRMICO/ACÚSTICO	
9- PLACA DE YESO COMUN e=12.5mm	
10- PLACA CEMENTICIA e=15mm	
11- REVESTIMIENTO CERÁMICO	

Figure 10 shows two section drawings of exterior walls, labeled M1a and M1b. Both walls are shown in section with internal structure and reinforcement details. The walls are labeled 'EXT.' on the left and 'INT.' on the right. A dimension line indicates a height of 4.50m for both walls. The base width is indicated as 0.30m. The drawings show the internal structure of the walls, including the placement of reinforcement bars and the connection to the floor and foundation. The walls are shown in section with internal structure and reinforcement details.

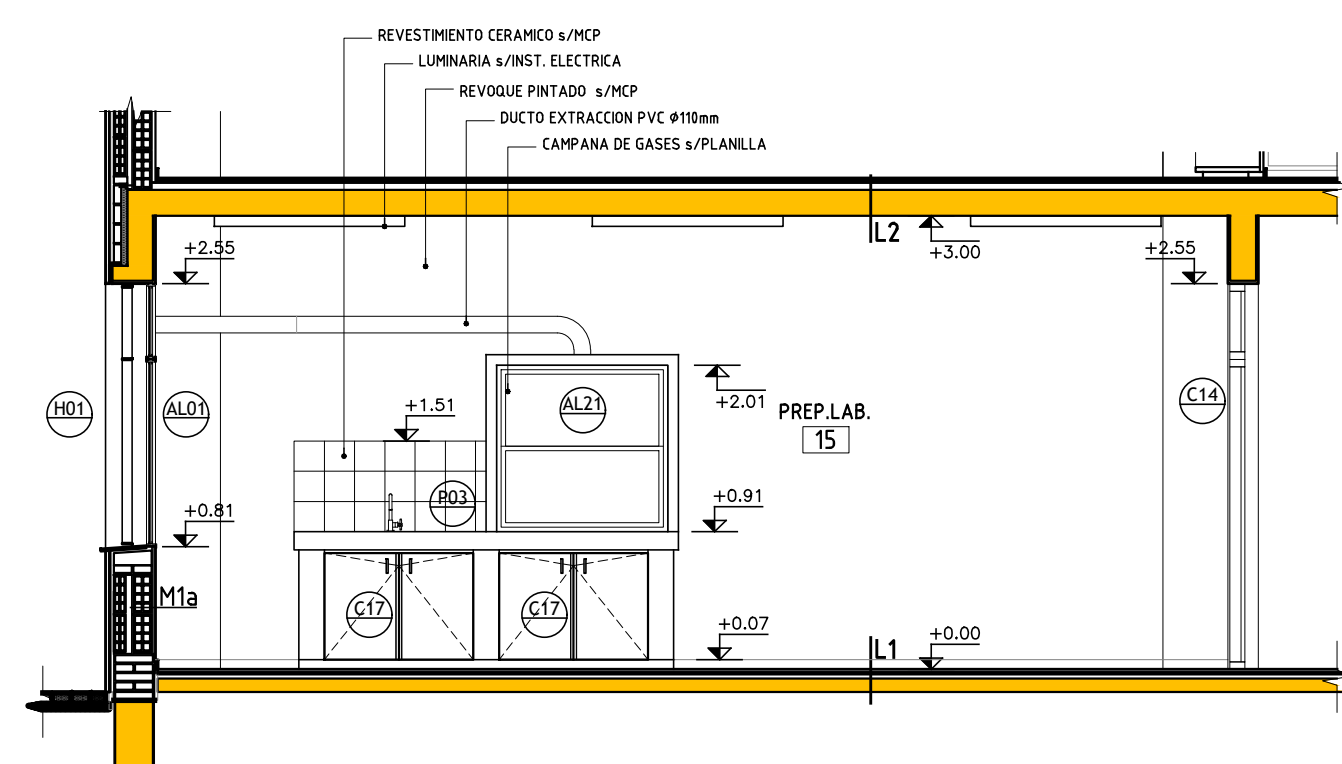
M U R O S I N T E R I O R E S

The drawings show the following details:

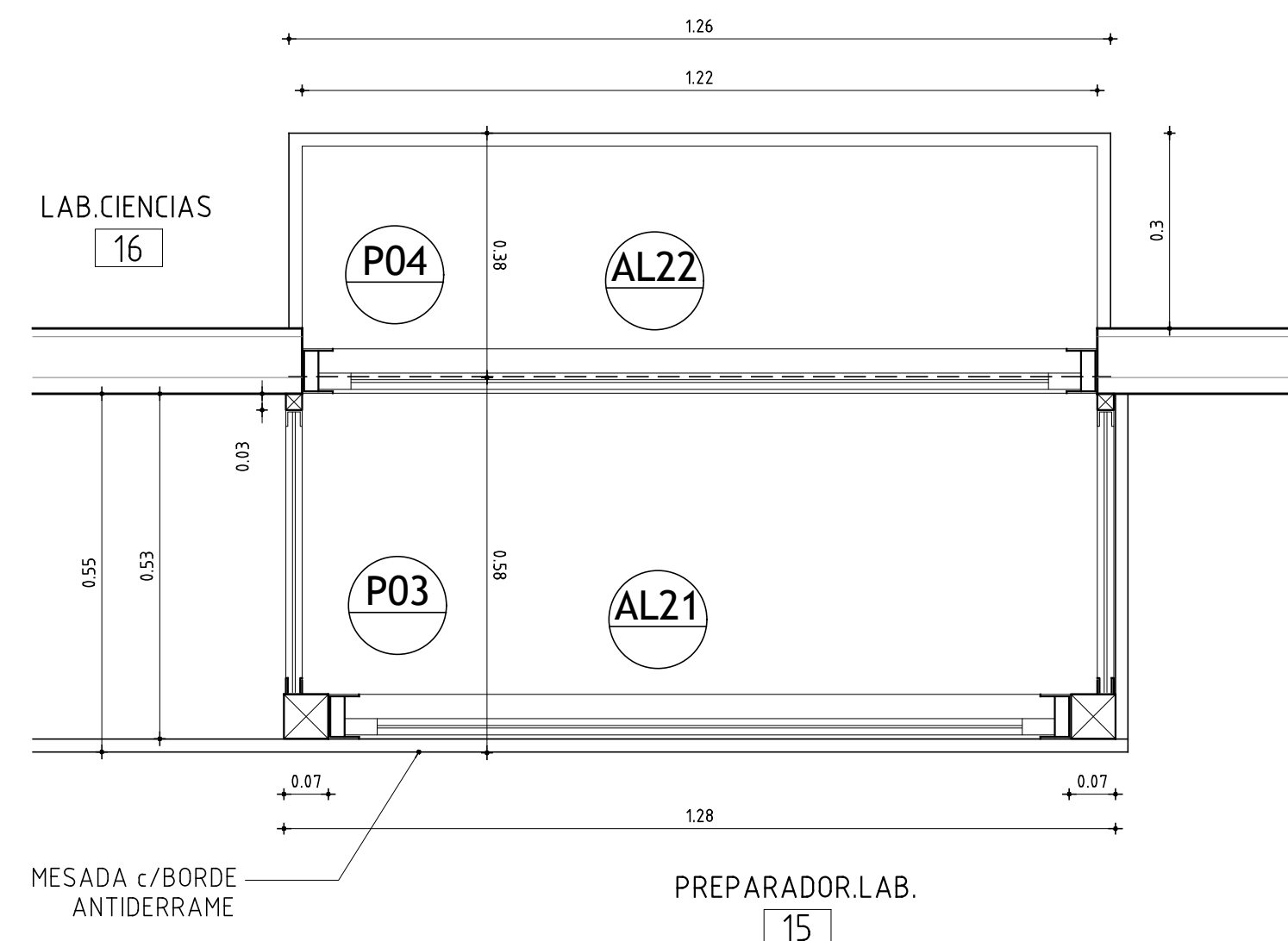
- M2a:** A wall with a central opening. Dimensions: 15, 7, 15, 10, 10.
- M2b:** A wall with a central opening and a vertical reinforcement bar. Dimensions: 15, 7, 15, 10, 10.
- M2c:** A wall with a central opening and a vertical reinforcement bar. Dimensions: 15, 7, 15, 10, 10.
- M3a:** A wall with a central opening and a vertical reinforcement bar. Dimensions: 15, 15, 17, 15, 1, 22, 17.
- M3b:** A wall with a central opening and a vertical reinforcement bar. Dimensions: 15, 15, 17, 15, 1, 22, 17.
- M4a:** A wall with a central opening and a vertical reinforcement bar. Dimensions: 15, 15, 17, 15, 1, 17, 17.
- M4b:** A wall with a central opening and a vertical reinforcement bar. Dimensions: 15, 15, 17, 15, 1, 17, 17.



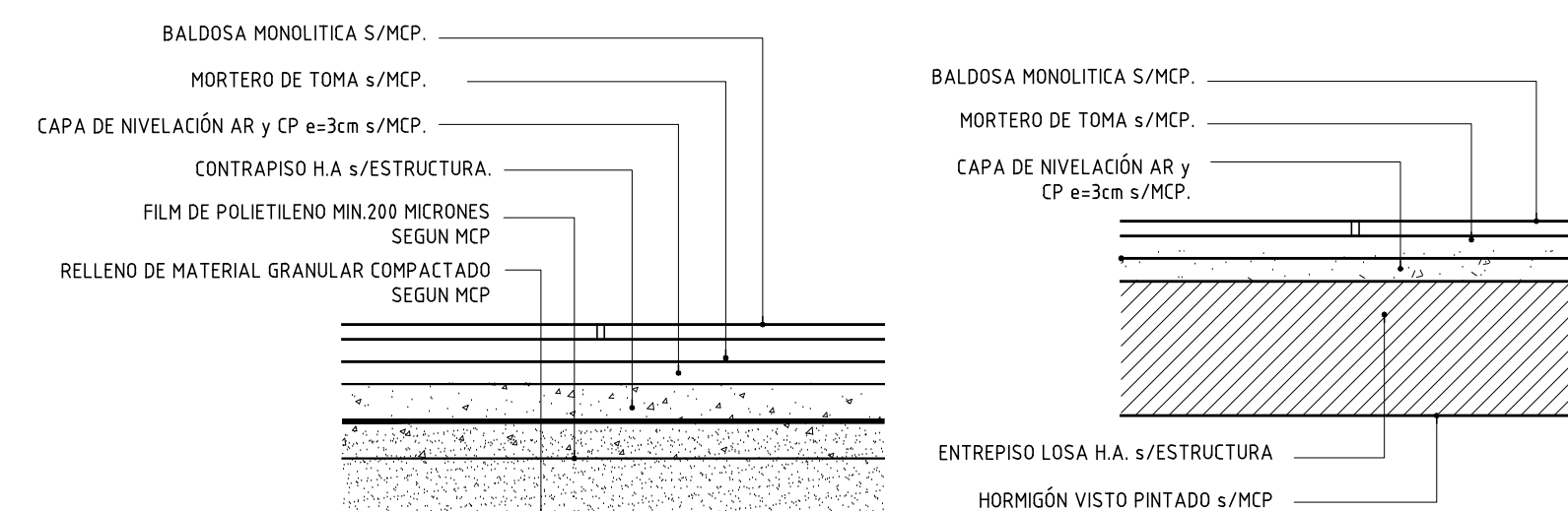
CORTE 2-2 ESC. 1:50



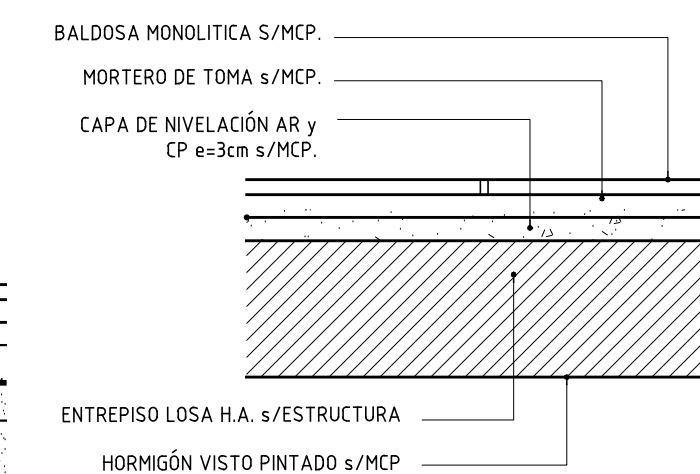
CORTE 1-1 ESC. 1:50



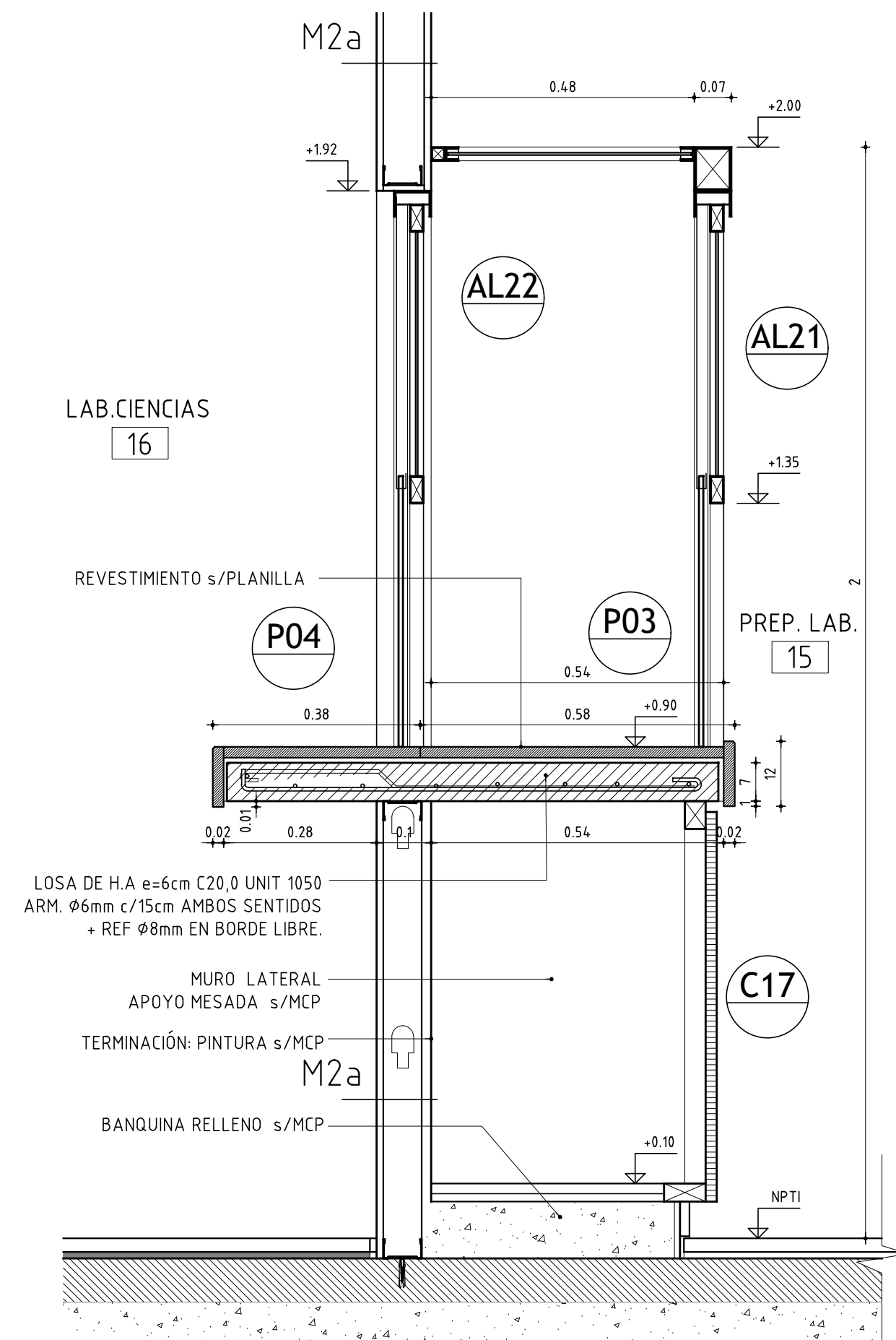
CAMPANA DE GASES - PLANTA
AYTE.PREPARADOR - ESC 1:10



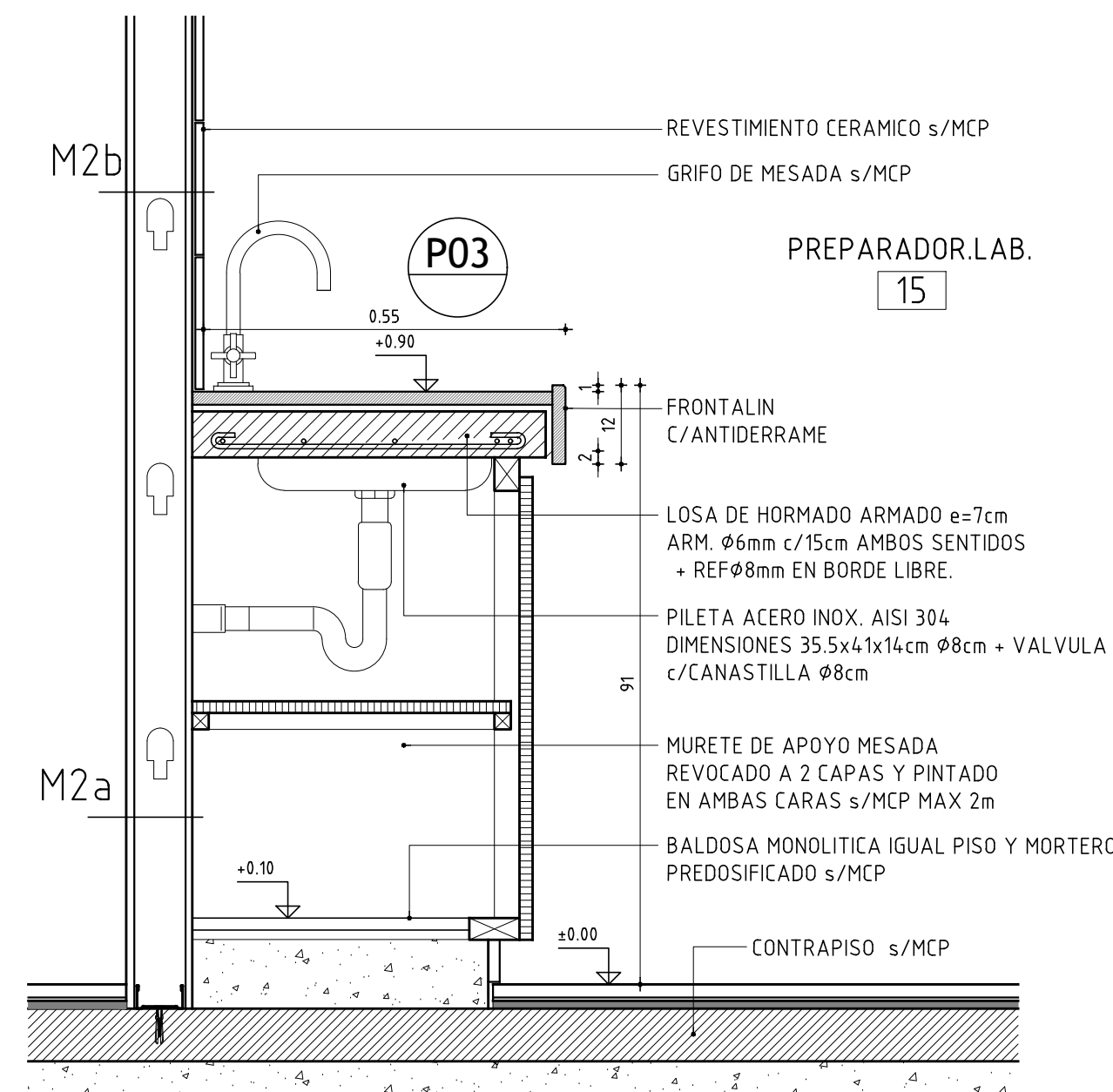
CERRAMIENTO HORZ. L1 - ESC 1:10



CERRAMIENTO HORZ. L2 - ESC 1:10



DET. CAMPANA DE GASES - CORTE 2
AYTE.PREPARADOR - ESC 1:10



DET. MESADA - CORTE 1
AYTE.PREPARADOR - ESC 1:10

TERMINACIONES

PISOS	PAREDES
CIELORRASO	ZOCALOS

PISOS

- 1 - BALDOSA MONOLITICA S/MCP
2 - HORMIGON S/MCP

ZOCALOS

- 1 - ZOCALO MONOLITICO S/MCP
2 - MADERA S/MCP

PAREDES

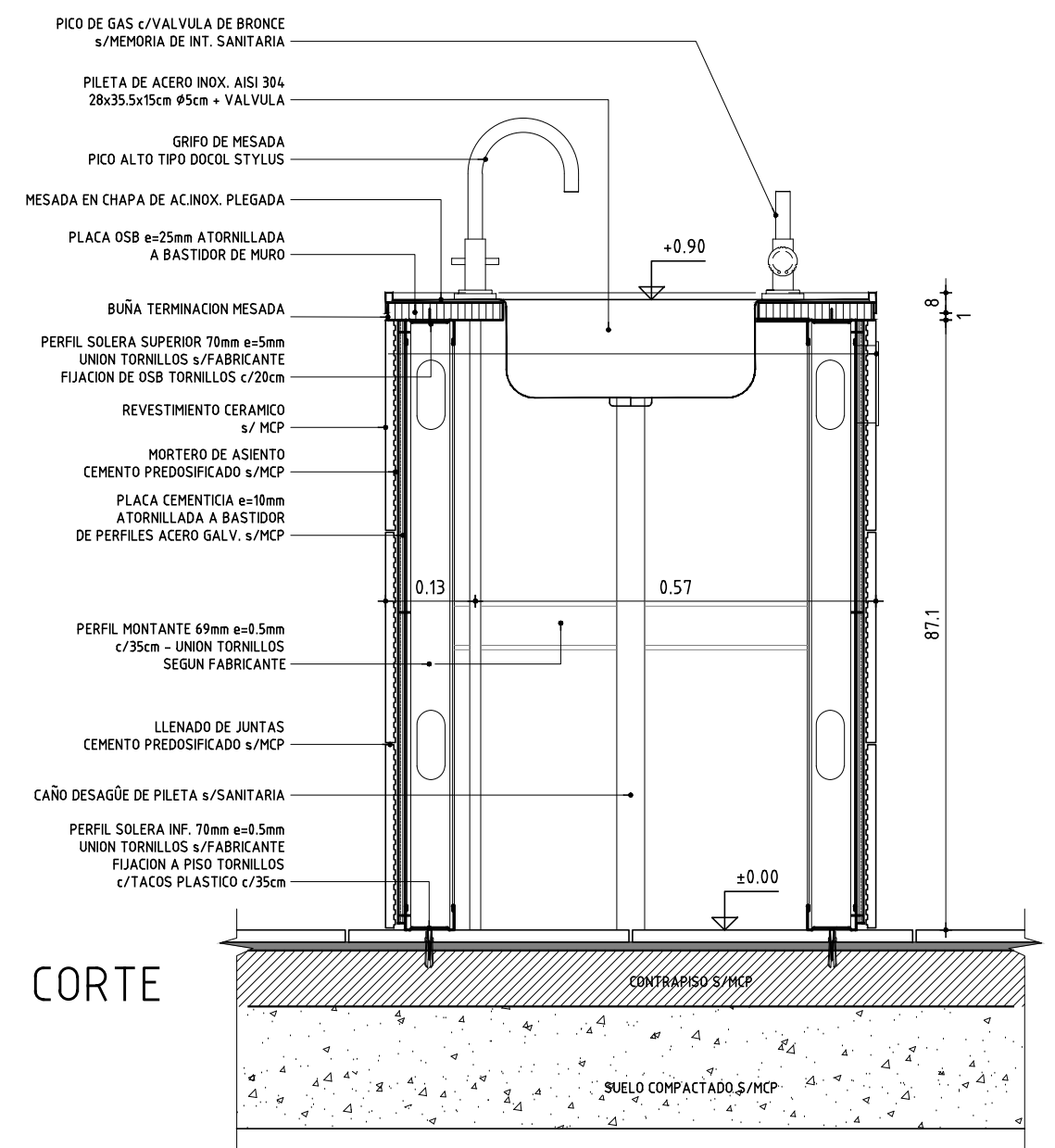
PARE

- 1 - PINTURA S/MCP
2 - REVOQUE Y PINTURA S/MCP
3 - REVESTIMIENTO CERAMICO S/MCP

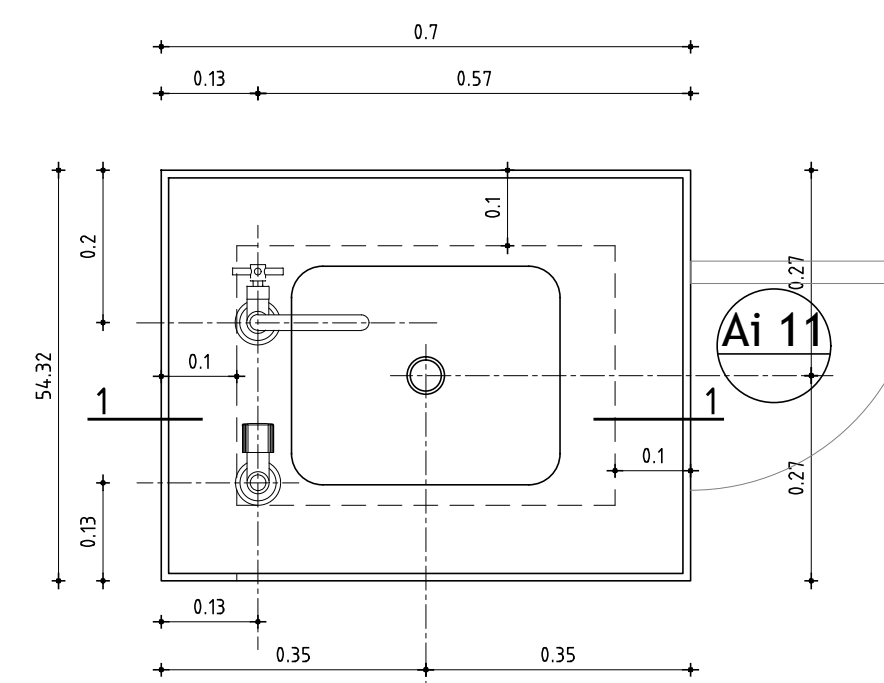
CIELORRASO

- 1 - PINTURA S/MCP
2 - PANEL FV+PVC S/DETALLE
3 - TABLILLA DE PVC S/MCP

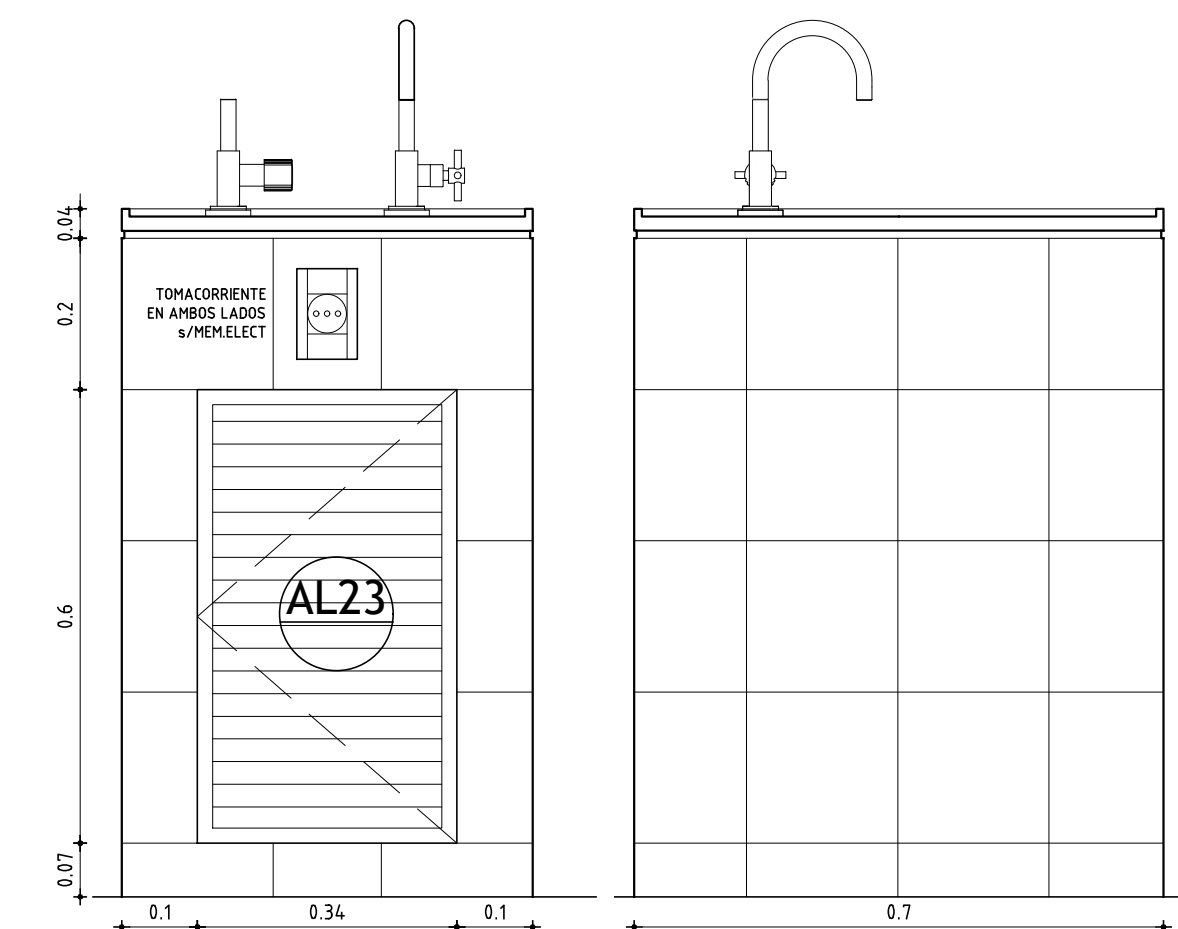
DETALLE PILETA LAB. LOCAL 16
ESCALA 1:10



CORTE



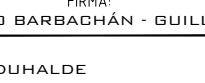
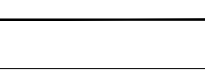


PLANTA



VISTA LATERAL
c/PUERTA INSPECCION

VISTA LATERAL

	<h2 style="text-align: center;">AREA DE PROYECTOS</h2>		
	DIRECCIÓN SECTORIAL DE INFRAESTRUCTURA <u>CONEJO DIRECTIVO CENTRAL</u>		
OBRA: LICEO N°8 CALLE: CALLE SERGIO MARTÍNEZ esq. TRÉS ARBOLES	LOCALIDAD: DEPARTAMENTO: RIVERA	RIVERA: RIVERA	FECHA: 6/2024 ESCALA: VARIADA
PLANO DE: <div style="text-align: center;">  </div>	<div style="text-align: center;"> ALBANILERIA LABORATORIO CIENCIAS / AYTE. PREPARADOR </div>		LAMINA N°: 14
ARQUITECTO: GABRIEL COLOMBO - PABLO BARBACHÁN - GUILLERMO SÁNCHEZ AYTE. DE ARQTO.: DIEGO DUHALDE			<div style="text-align: center;">  </div>
TÉCNICO: DIEGO DUHALDE FIRMA:			
DIBUJANTE:			<div style="text-align: center;">  </div>